

UHF ANTENNA

LR A5010

PRODUCT DESCRIPTION

Optimized for industrial and outdoor workplaces, the circularly polarised UHF Long Range Antenna LR A5010 is a powerful, hard-wearing UHF device with a compact 250mm / 10 inch square footprint.

Just 14 mm / 0.55 in. thick, this ultra-low profile UHF antenna offers a solution for a variety of applications. It perfectly complements our BLUEBOX RFID readers and writers for a reliable and constant implementation of RFID technologies.

Rated IP67 for permanent outdoor and indoor use and built to iDTRONIC's high standard for quality and robustness, the LR A5010 creates a new benchmark for multi-purpose industrial grade RFID antennas.



► APPLICATIONS

- Industrial Automation
- Supply Chain
- Asset Tracking
- Logistics

► FEATURES

- Reflection protection
- Clever mounting design
- Slim form factor
- Very low axial ratio,
- High IP-rating

► RFID OPTIONS

- 864 – 868 MHz (ETSI)
- 902 – 928 MHz (FCC)

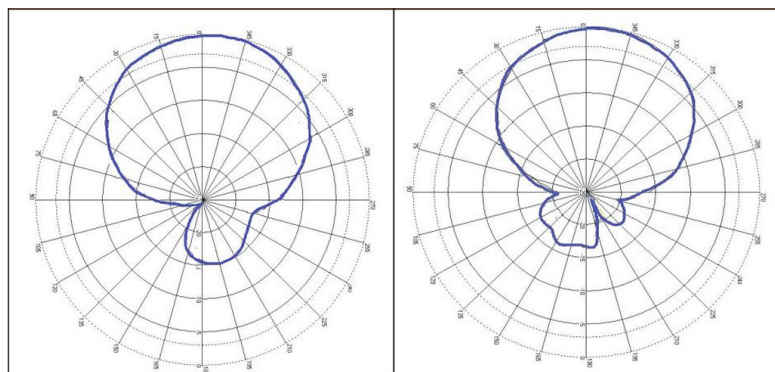
TECHNICAL DATA

ELECTRICAL SPECIFICATIONS	
Frequency Range	864 – 869 MHz (EU) 902 – 928 MHz (US)
Polarization	RHCP (Right Hand Circular Polarized)
Operating Distance	up to 8 m*
Connector Type	SMA female side connector
Antenna Gain	8.5 dBiC typical
Beam width	68° in both planes
VSWR	1.3 typical
Front to back	-20 dB
Axial Ratio	1 dB typical
Nominal Impedance	50 Ω
Anti-static protection	DC Grounded
Antenna Detection	10K Ω resistance
Maximum Input Power	3 W

MECHANICAL ENVIRONMENTAL SPECIFICATIONS	
Dimensions	250 × 250 × 14 mm
Weight	0.65 kg
Housing-Material	UV-Resistant / Fire-Retardant ABS
Environmental Rating	IP67
Operating & Storage Temperature	-20 ° to +65 °C
Mounting	Flush or VESA mount
Humidity	5% to 95%

SUPPORTED TRANSPONDERS
Standard ISO 18000-6C (EPC Class 1 Generation 2) E.g.: Alien Higgs 2/3/4, Impinj Monza, NXP UCODE, etc.

RADIATION PATTERN & ANTENNA PLANES



LR A5010 XZ Plane

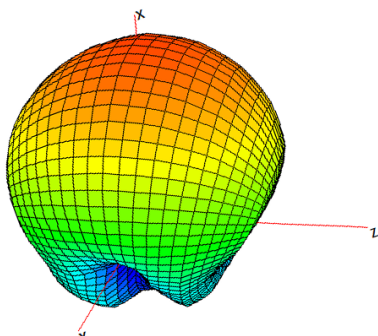
LR A5010 YZ Plane



ORDER CODE

VERSION	ORDER CODE
LR A5010 UHF Antenna - ETSI	R-IN-UHF-A5010
LR A5010 UHF Antenna - FCC	R-IN-UHF-A5010-FCC
ACCESSORIES	ORDER CODE
Mounting Plate (Flush to Stud) for LR A5010 UHF Antenna	R-IN-AC-9935U

3D E-FIELD



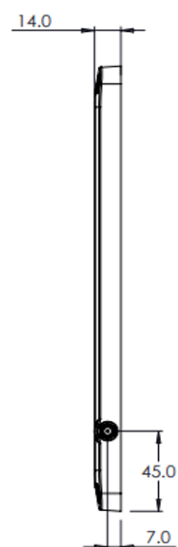
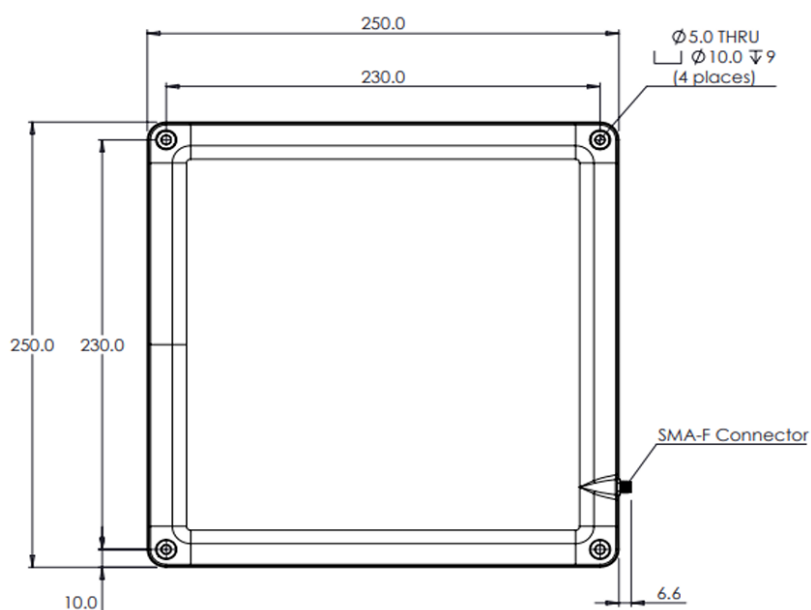
PRODUCT PICTURES



STUD MOUNT



DIMENSIONS



A5010
Flush Antenna

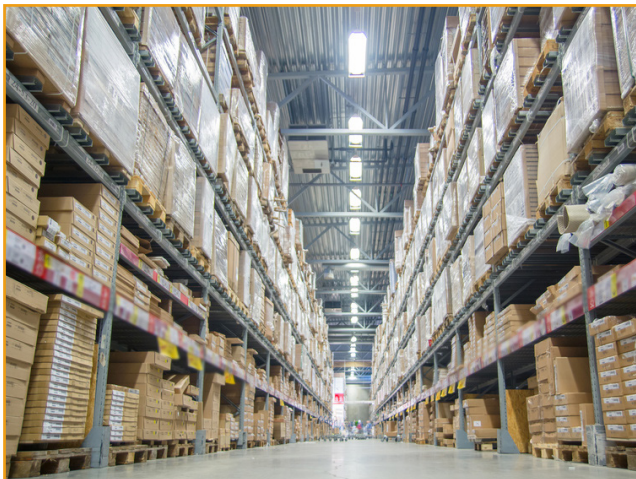


A5010
Stud Antenna

APPLICATION EXAMPLES

WAREHOUSING

The LR A5010 can be deployed on different warehouse shelves and environments. With its superb aesthetics and compact design, the LR A5010 antenna integrates into a wide range of warehouse setups across diverse industries.



RETAIL MANAGEMENT

The antenna can easily be deployed in space constrained environments such as retail. With its compact design, the antenna blends well into the retail back drop.

The LR A5010 antenna sends a signal to the controller's computer when the retail items / containers enter or leave the shop floor. The management can react quickly and have an overview of the movement of merchandise.



MEDICAL & PHARMACEUTICAL

The LR A5010 can operate at temperatures as low as 0° Celsius (32° Fahrenheit). High-value pharmaceutical assets can be tracked in fridges and freezers using the LR A5010 antenna. The slim design maximizes the usable space inside a refrigerator. The antenna can handle general-purpose cleaning agents and is water-resistant. The white-colored LR A5010 antenna is suitable for hospitals, medical laboratories, research industries, and pharmaceutical labs.

