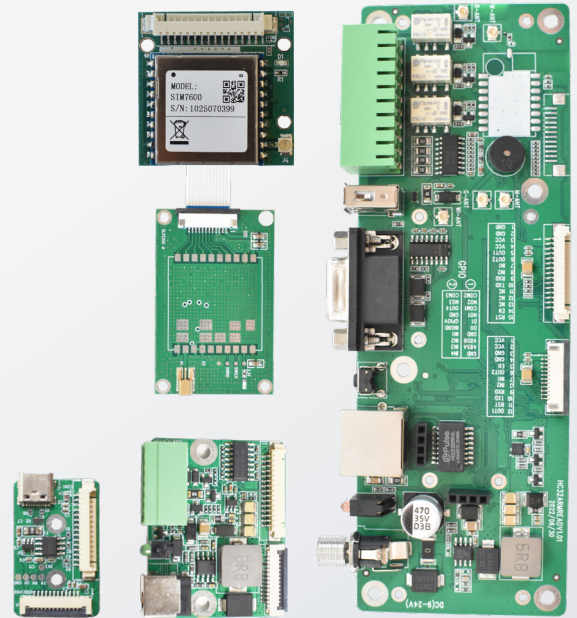




Embedded UHF Interface Boards

**B50 / B60 / B100 /
B200 / B900**



PRODUCT DESCRIPTION

The iDTRONIC EMBEDDED UHF INTERFACE BOARDS are designed for easy RF module testing and assembly of complete machines. The product series adopts an industrial-grade design. A variety of modules, such as M500, M600, M620, M630, M650, M670 and M690 can be directly connected to the board.

Standard communication interfaces such as USB Type-C, RS232 and TCP/IP are provided. These boards are convenient for evaluating the performance of RF modules and can be combined with a shell to make a fixed reader with compact structure, convenient installation, and stable performance, suitable for various industrial applications.

The interface boards also facilitate testing of GPIO operations, reset, power-on control, etc. The B100 is powered by USB, while the B200 and B900 are powered by 9-24V. (POE additionally only for B900 (802.3at/af)).

iDTRONIC's clients can quickly evaluate the performance of RF modules thanks to these boards, and develop their own products based on open-source information.

APPLICATIONS

- RFID UHF Module Testing
- Electronics Development
- Production / Manufacturing

FEATURES

- Communication Interfaces: USB (2.0, Type C), RS232 and Ethernet
- GPIO Ports
- IP Reset Button
- LED Power / Status Indicator Lights
- 12-Pin FPC or 15-Pin Ribbon Connectors

CHIP OPTIONS

- UHF (EPC C1 GEN2 | ISO 18000-63)

INTERFACE BOARDS

All Interface boards compatible only with M620, M630, M650, M670, M690



	B100	B200	B900
GENERAL SPECIFICATIONS			
Description	Embedded UHF interface Board B100	Embedded UHF interface Board B200	Embedded UHF interface Board B900
Dimensions	35 × 22 × 4.6 mm	35 × 45 × 11.6 mm	160 × 64 × 19.2 mm
Weight	3.6 g	14 g	79.8 g
ELECTRICAL SPECIFICATIONS			
Power Supply	USB Type-C 5V	9-24V with standard adapter (12V/3A)	9-24V with standard adapter (12V/3A) POE power supply (compatible with 802.3af or 802.3at standard)
Power Consumption	0.5W during operation of the single board	0.5W during operation of the single board	POE power supply capacity: Using a 100-meter ultra-five-category network cable, different types of POE switches have deviations.
Communication Interface	USB (9600 - 921600 bps)	RS232 (9600 - 460800 bps)	10M/100M adaptive Ethernet, RS232 (9600 - 230400 bps), USB (9600 - 921600 bps)
Connectors	12-Pin FPC and 15-Pin Ribbon		
GPIO	-	1 input, 1 strong driver output (each pull-up current can reach 250mA)	4 input, 4 strong driver output (each pull-up current can reach 250mA)
Indicator LEDs	-	Power indicator (green)	Power indicator (green), Status indicator (red)
SDK INFORMATION			
Supported OS	Windows, Linux, Android		
Languages	C, C#/I.NET, Java		
Demo Software	Windows		
ORDER CODES			
	ACC-CB-UHF-USB	ACC-CB-UHF-232	ACC-CB-UHF-ET

CARRIER BOARDS

Carrier boards only compatible with M500 to B50 and M600 to B60



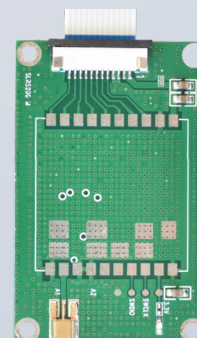
M500



B50



M600



B60